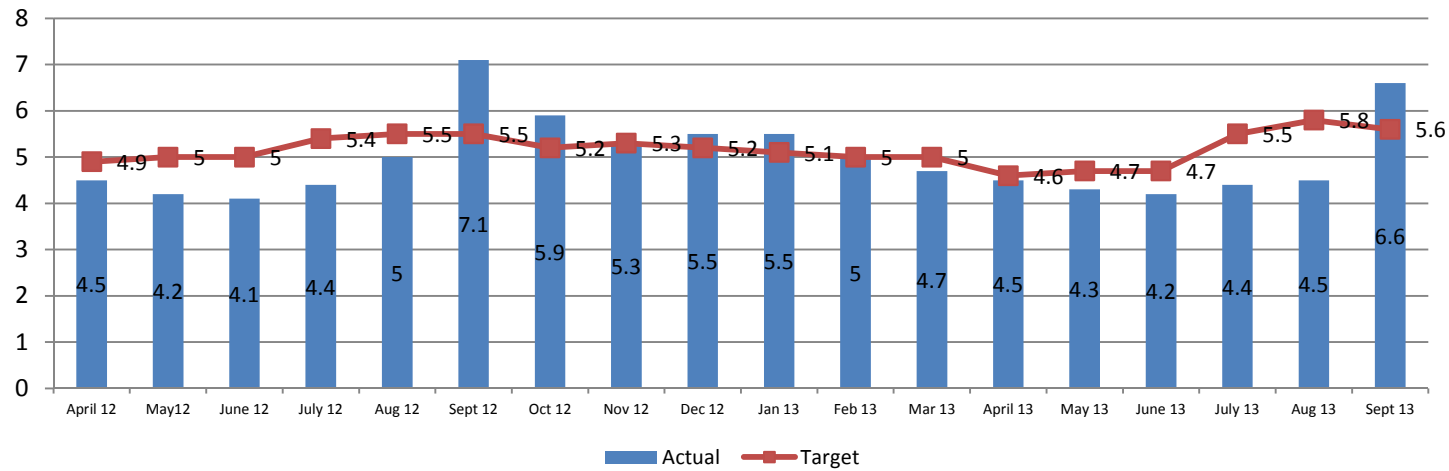
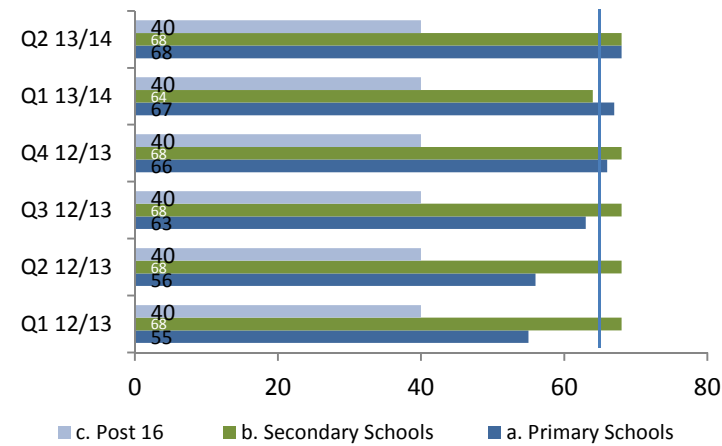


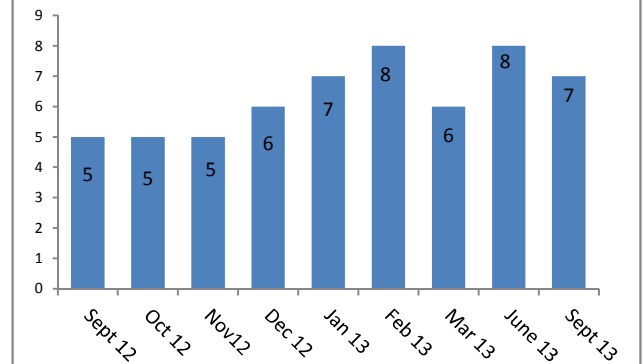
1. L&S01a 16 to 18 year olds who are not in education, employment or training



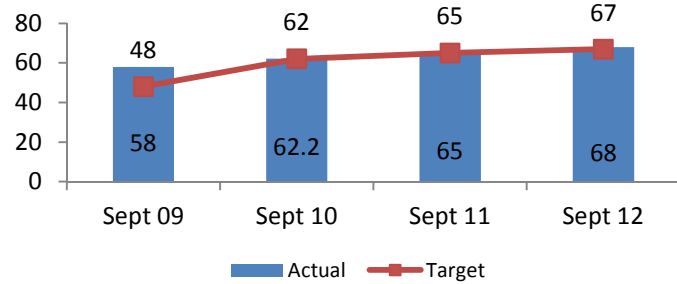
2. % of Schools rated good/outstanding



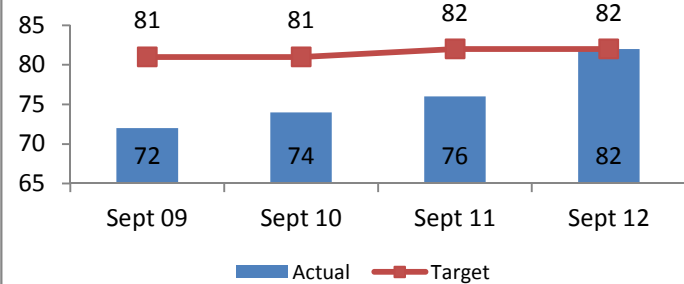
3. NI089a The number of schools requiring special measures



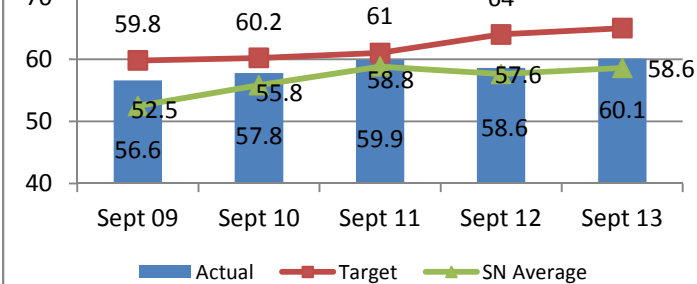
4. NI072 at least 78 points across EYFS with at least 6 in each of the scales



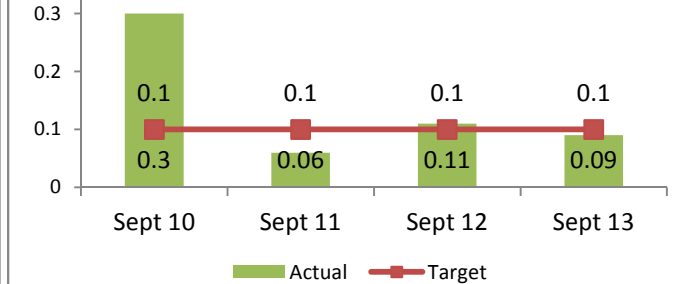
5. NI073 Achievement at level 4 or above on both English and Maths in KS2



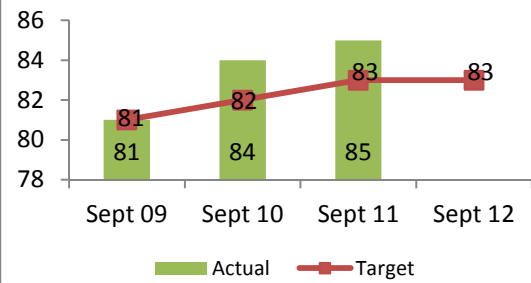
6. NI075 5 or more A*-C at GCSE or equivalent incl. Eng and Maths



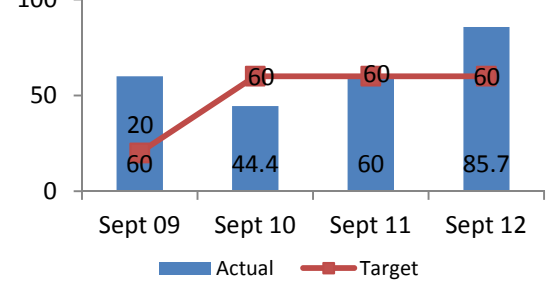
7. NI114 Permanent exclusions from school



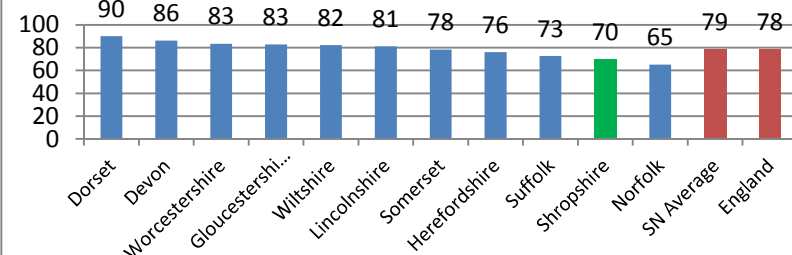
8. NI091 Participation in education or training aged 17



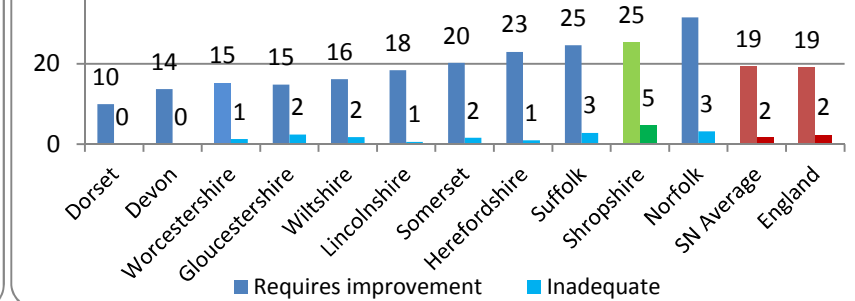
9. NI099 LAC reaching L4 in Eng at KS2



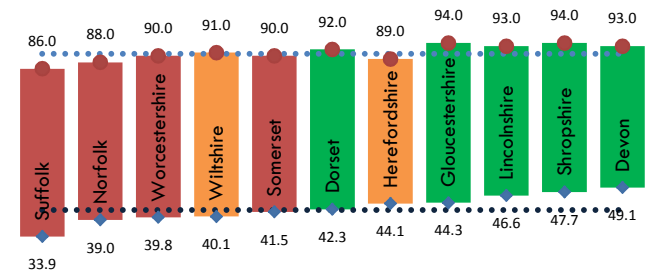
10. % of schools rates good or outstanding (most recent overall effectiveness judgement for schools inspected at 30 Sep 2013)



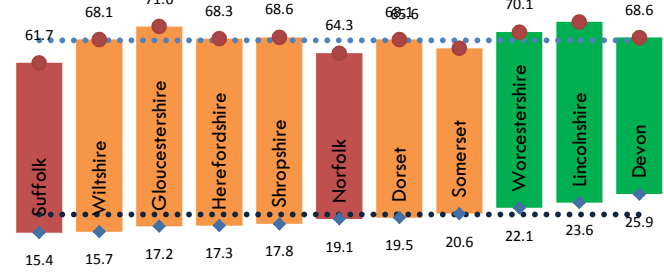
11. % of schools rated as requiring improvement or inadequate (most recent overall effectiveness judgement for schools inspected at 30 Sep 2013)



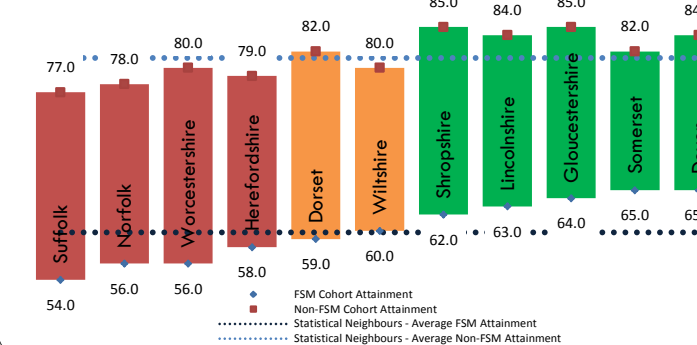
12. Attainment Gap: KS2 Pupils achieving level 4 or above in both English and Maths all SEN vs non SEN 2011/12



13. Attainment Gap: KS4 Pupils achieving 5+ A*-C grade GCSEs inc. English and Maths all SEN vs non SEN 2011/12



14. KS2 pupils achieving L4 in both English and Maths Gap between FSM & Non FSM Attainment 2011/12



15. KS4 pupils achieving 5A*-C GCSEs inc. English and Maths 3 Year Aggregate Gap between FSM & Non FSM Attainment 2011/12

